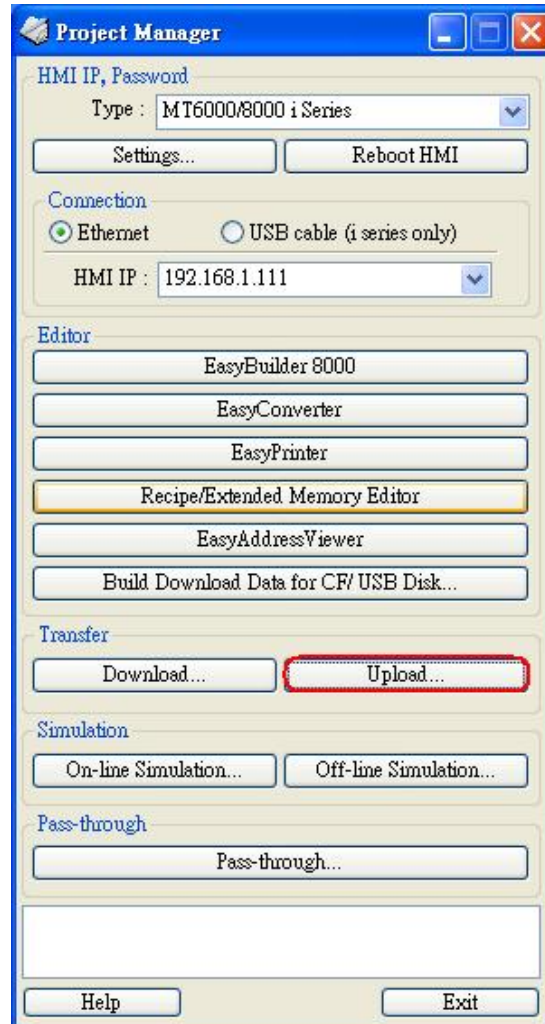
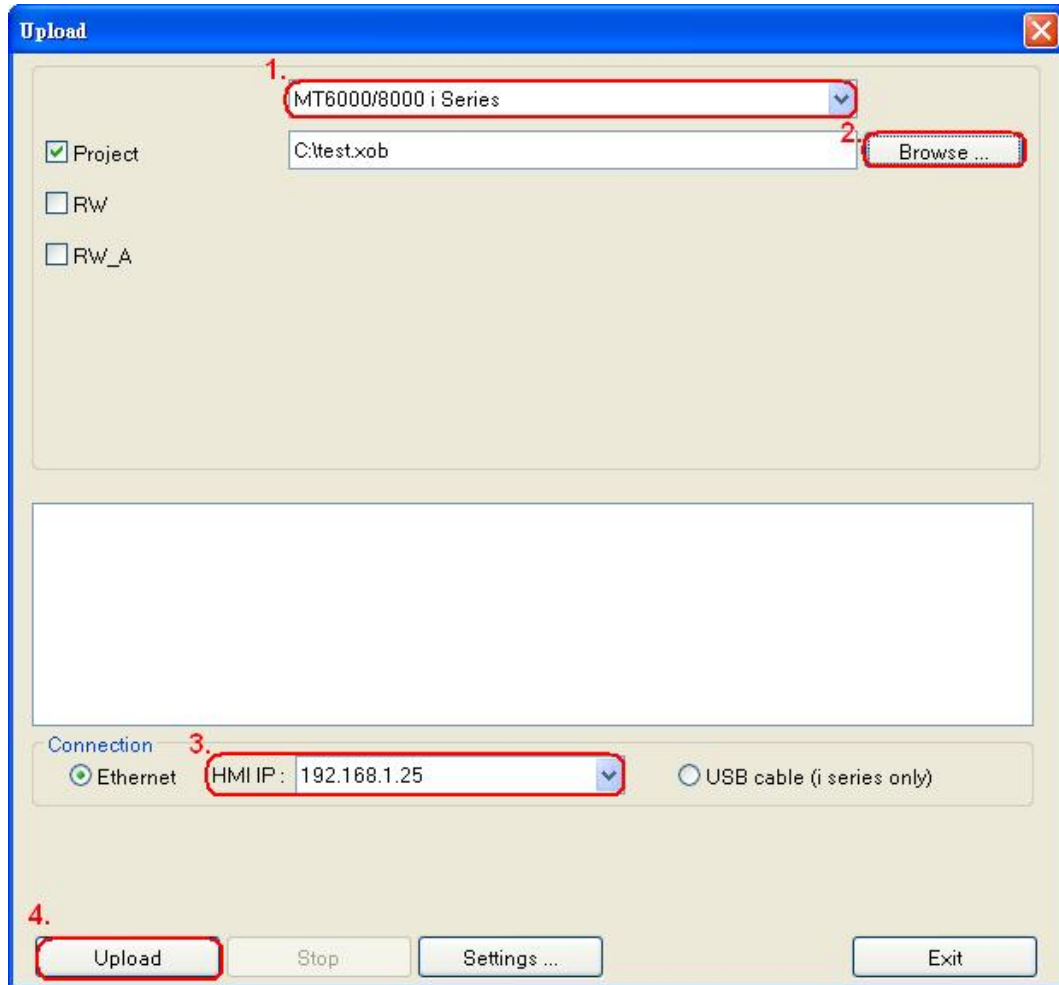


## How to use upload function



1. Click “Upload” button from Project Manager.



2. After Upload dialog box pops up, click Browse to select location to save the file. Designate the HMI IP address and press Upload button.



3. When uploading is finished, press “Exit”. The upload file will be created.

 RASSETUP1.LOG	17 KB
 RASSETUP2.LOG	8 KB
 RASSETUP3.LOG	2 KB
 RASSETUP4.LOG	5 KB
 RASSETUP5.LOG	5 KB
 RASSETUP.LOG	13 KB
 RHDSetup.log	1 KB
 test.xob	863 KB