

The Panasonic logo is located in the top right corner of the slide. It consists of the word "Panasonic" in a white, bold, sans-serif font, centered within a blue rectangular background that has a subtle gradient from top to bottom.

FP7 FMU Profibus Master_(AFP7NPFBM)

Sample Info

Download Hilscher DVD

Download DVD:

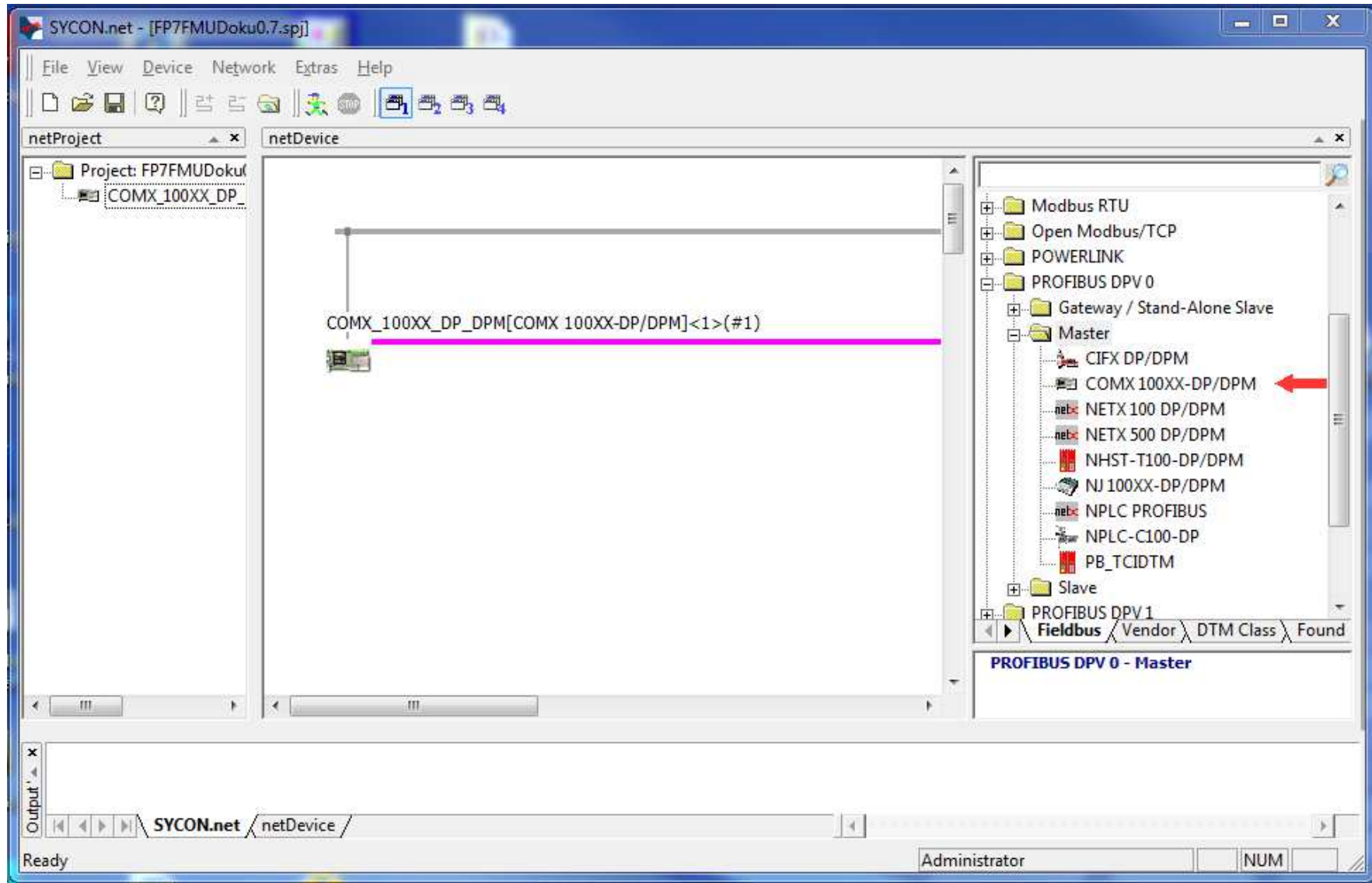
Communication Solutions DVD for cifX, comX and netJACK (DVD)

http://www.hilscher.com/fileadmin/big_data/en-US/Resources/zip/Communication_Solutions_DVD_2014-08-1_V1_360_131205_11452.zip

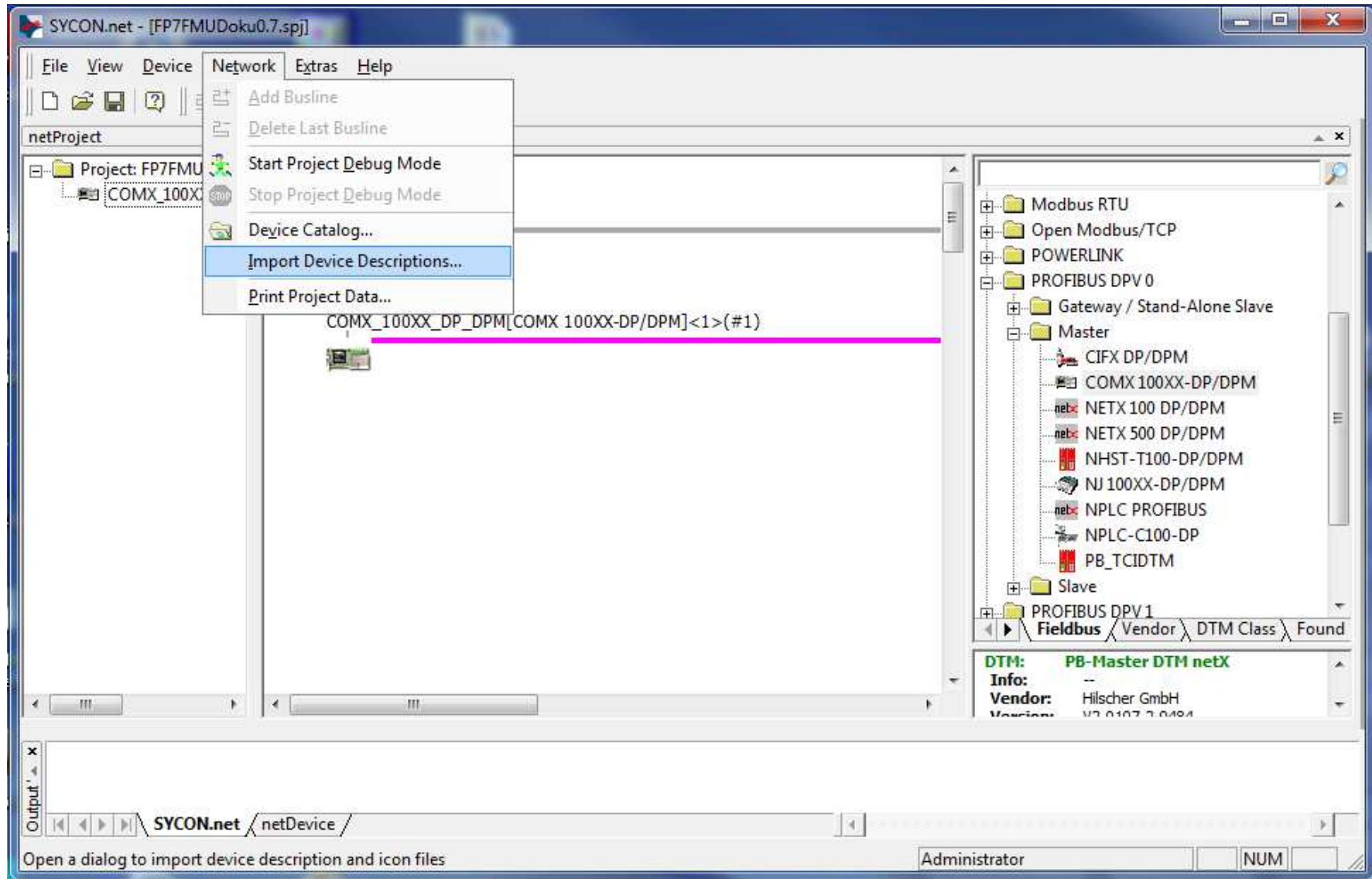
- If Configurator FM is installed, uninstall it
- Install SYCON.net
- Install USB Driver for Netx100

- The first time start Sycon.net with administrator rights

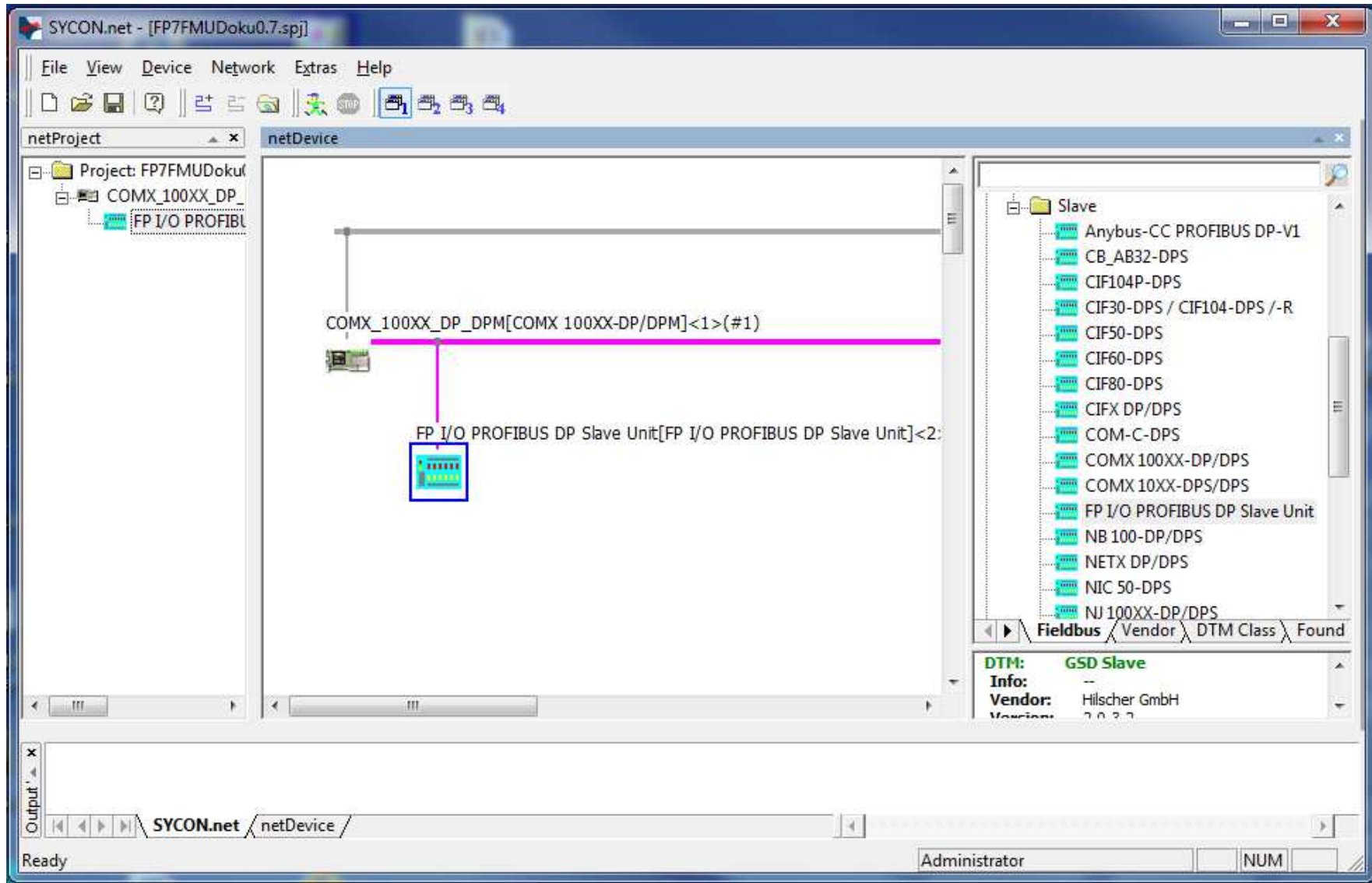
Start Sycon.net and Select COMX100xx-DP/DPM



Import GSD files for Slaves



Add slaves



Double click to slave to configure the slave

IO Device: FP I/O PROFIBUS DP Slave Unit
Vendor: Matsushita Electric Works
Device ID: 0x0531
Vendor ID: -

Modules

Available Modules:

Module	Inputs	Outputs	In/Out	Identifier
8/16 Input and 0 Output	2	0	0	0x11
0 Input and 8/16 Output	0	2	0	0x21
4/8/16 Input and 4/8/2 Output	2	0	0	0x11,0x21
FP0 DPS	4	4	0	0x13,0x23
FP0 IOL	4	4	0	0x13,0x23
FP0 A21	4	2	0	0x13,0x21
FP0 A80 / TC4 / TC8	16	0	0	0x1F

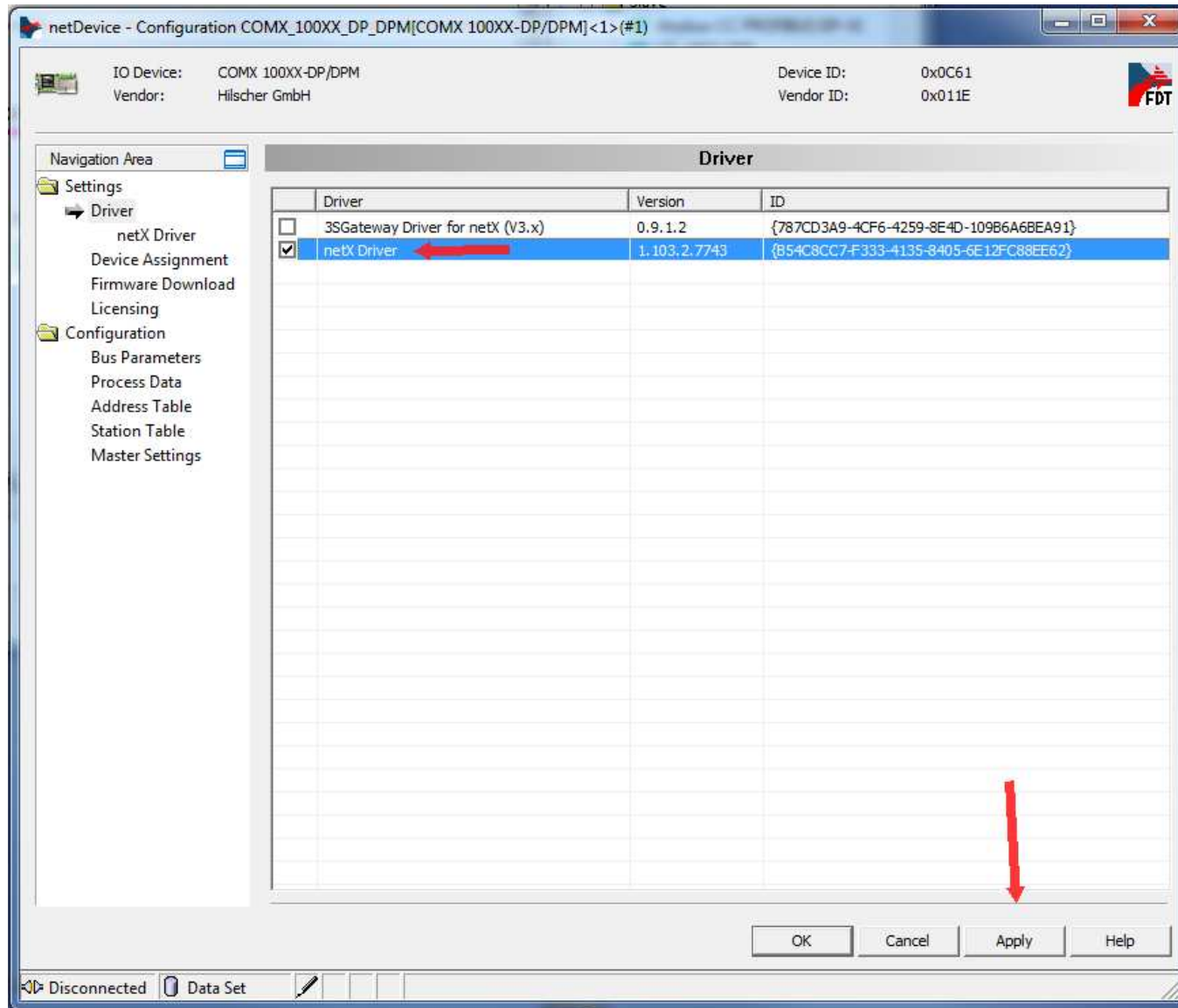
Configured Modules:

Slot	Module	Inputs	Outputs	In/Out	Identifier
1	FP0 DPS	4	4	0	0x13,0x23

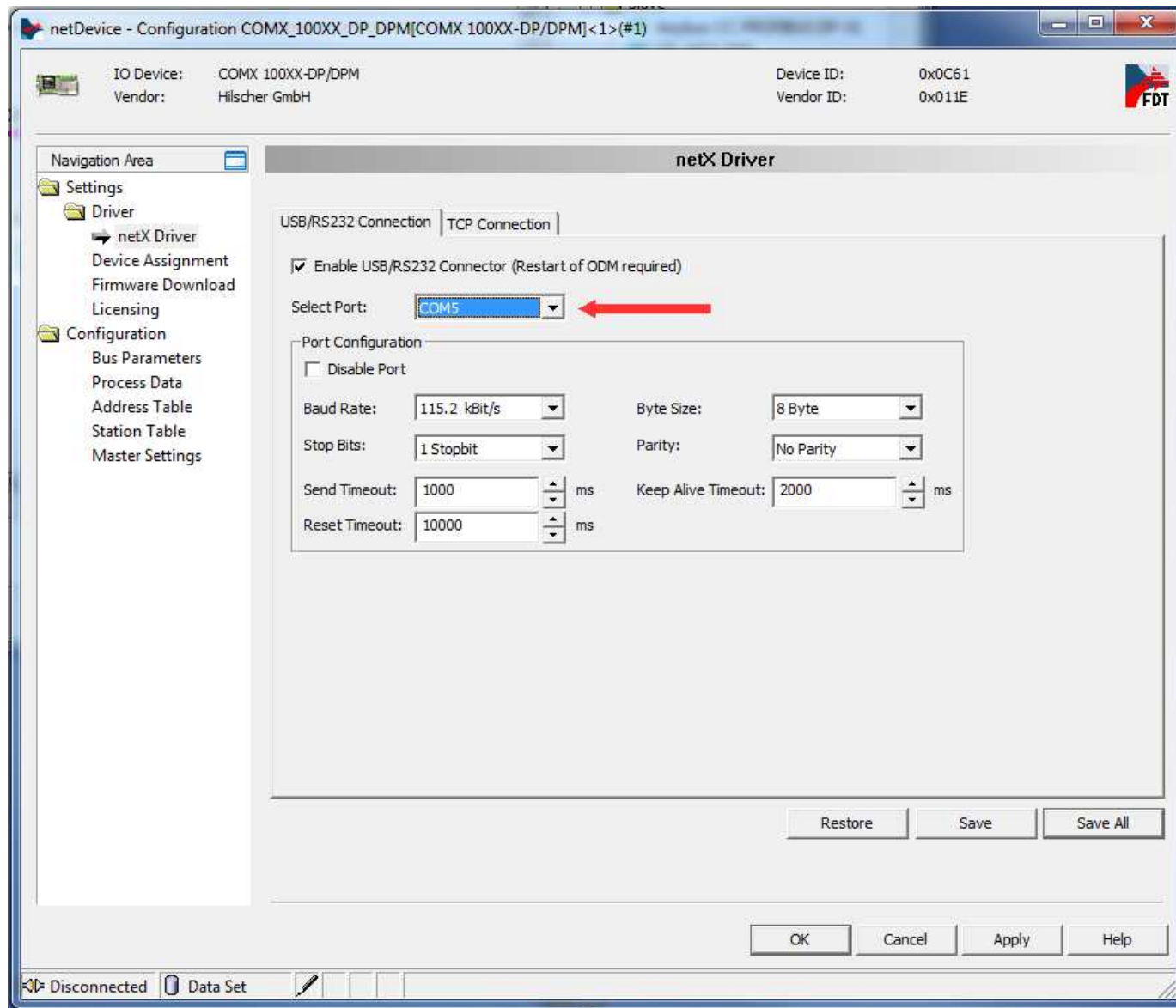
Length of input/output data: 8 bytes (max. 96 bytes)
Length of input data: 4 bytes (max. 48 bytes)
Length of output data: 4 bytes (max. 48 bytes)
Number of modules: 1 (max. 3)

Buttons: Insert, Append, Remove, OK, Cancel, Apply, Help

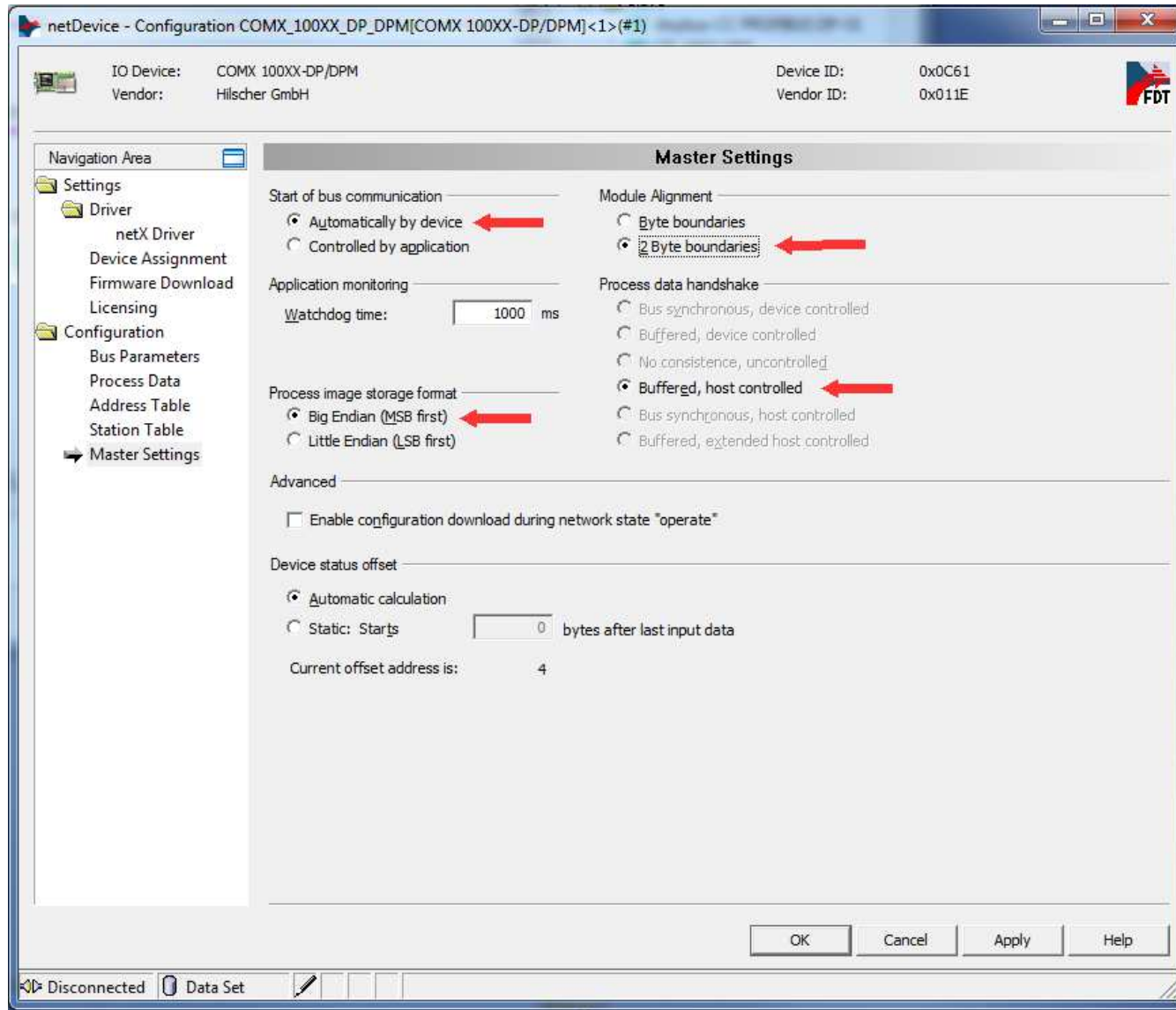
Double click to Master: Driver Settings



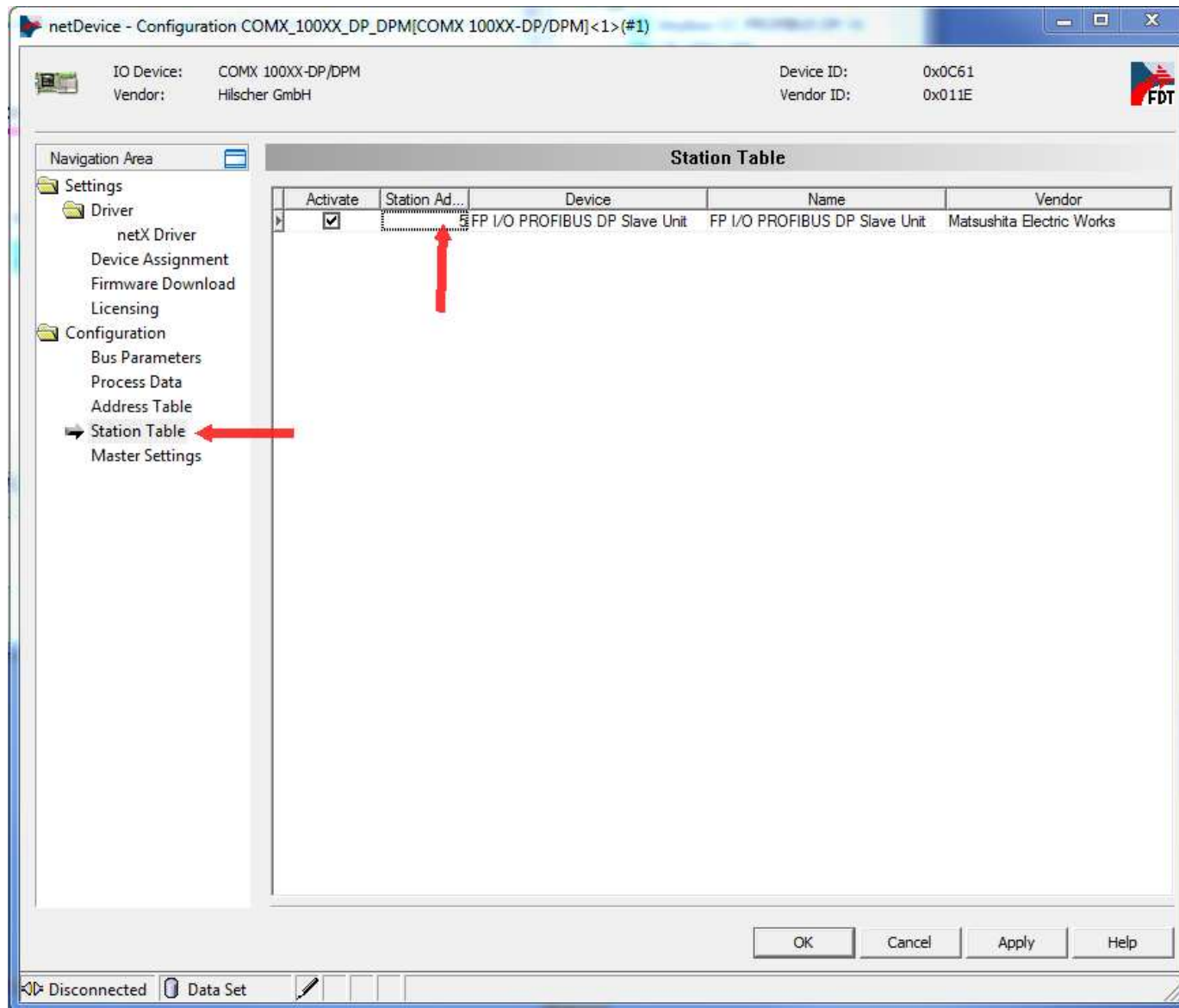
Select the correct USB/COM port



Change the Master settings



Set correct Slave address



I / O Mapping for FPWIN Pro

netDevice - Configuration COMX_100XX_DP_DPM[COMX 100XX-DP/DPM]<1>(#1)

IO Device: COMX 100XX-DP/DPM
Vendor: Hilscher GmbH

Device ID: 0x0C61
Vendor ID: 0x011E

Navigation Area

- Settings
 - Driver
 - netX Driver
 - Device Assignment
 - Firmware Download
 - Licensing
 - Configuration
 - Bus Parameters
 - Process Data
 - Address Table**
 - Station Table
 - Master Settings

Address Table

Auto addressing Display mode: Decimal CSV Export

Inputs:

Station Ad...	Device	Name	Module	Type	Length	Address
2	Anybus-CC PROFIBUS DP-V1	Anybus-CC PROFIBUS DP-V1	1 word input IW		1	0
3	Anybus-CC PROFIBUS DP-V1	Anybus-CC PROFIBUS DP-V1	4 word input IW		4	2
5	FP I/O PROFIBUS DP Slave U	FP I/O PROFIBUS DP Slave U	4 byte input IB		4	10

In Bytes

Outputs:

Station Ad...	Device	Name	Module	Type	Length	Address
2	Anybus-CC PROFIBUS DP-V1	Anybus-CC PROFIBUS DP-V1	2 word output QW		2	0
3	Anybus-CC PROFIBUS DP-V1	Anybus-CC PROFIBUS DP-V1	4 word output QW		4	4
5	FP I/O PROFIBUS DP Slave U	FP I/O PROFIBUS DP Slave U	4 byte output QB		4	12

In Bytes

OK Cancel Apply Help

Disconnected Data Set

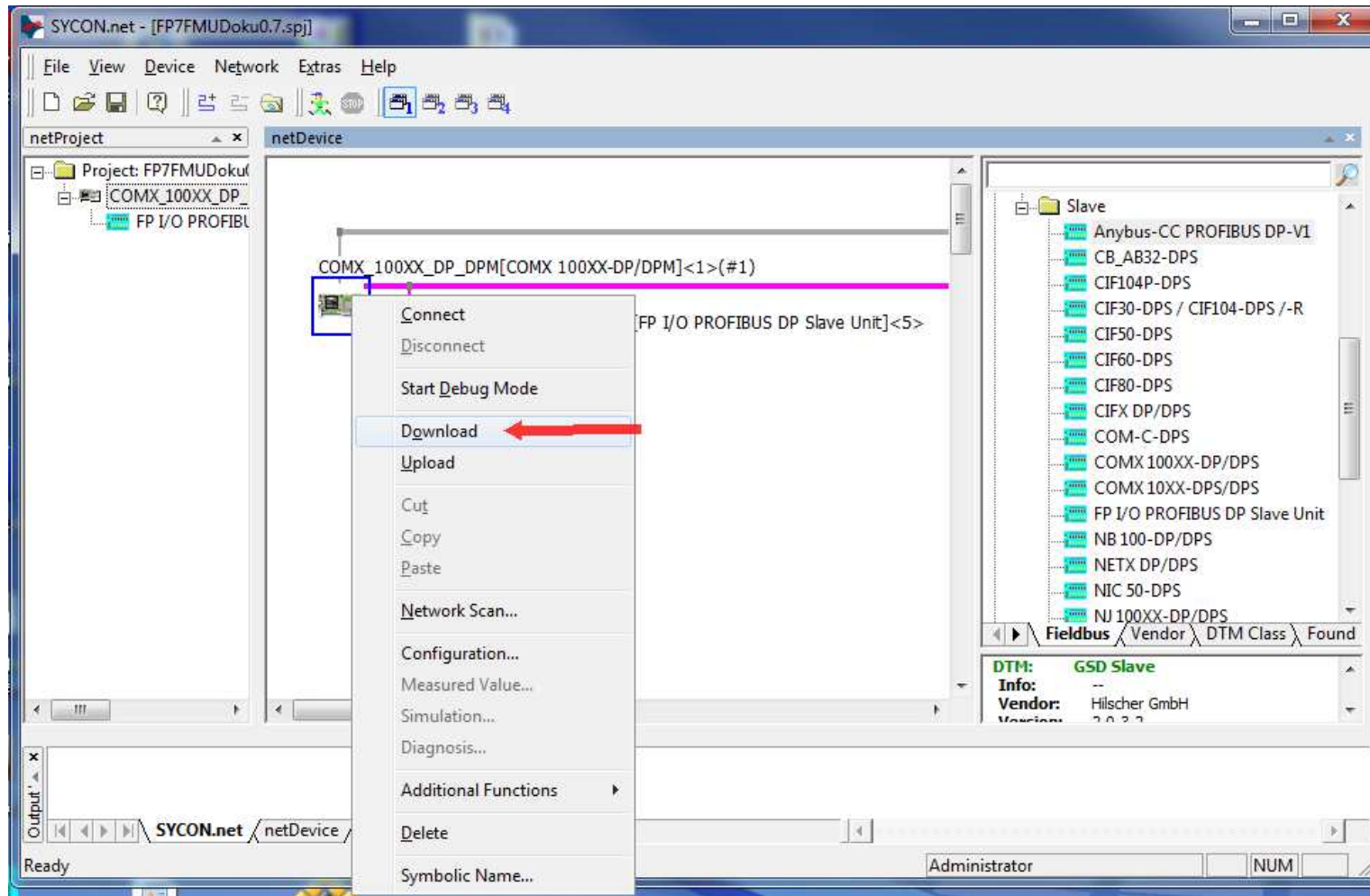
Press "ok" to close the Master configuration

Download settings to the Master

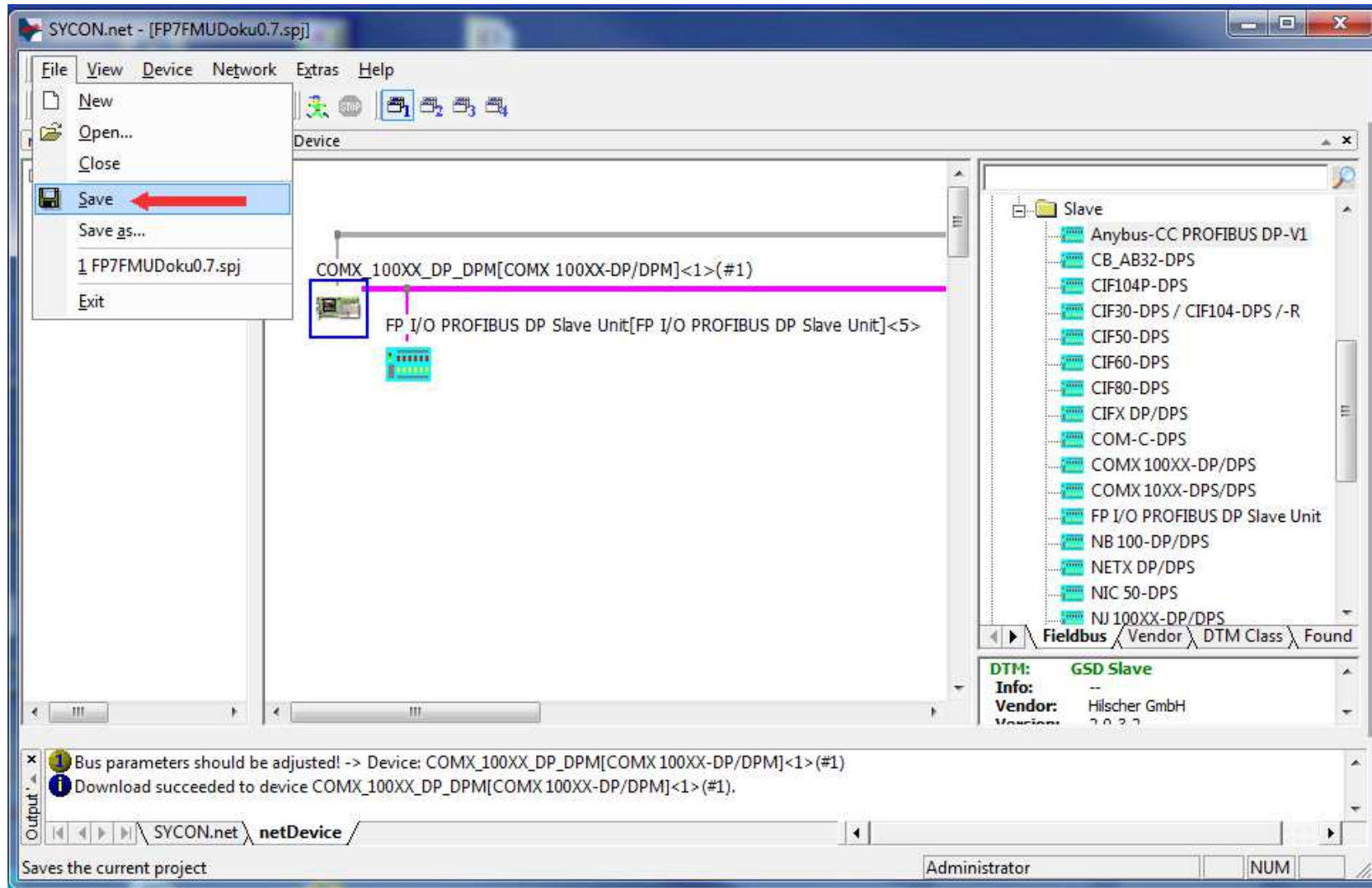
Connect the FMU with the PC(use the USB cable for theFP7)

Do not use 2 cable !

Select the Master and right mouse click



Save the project

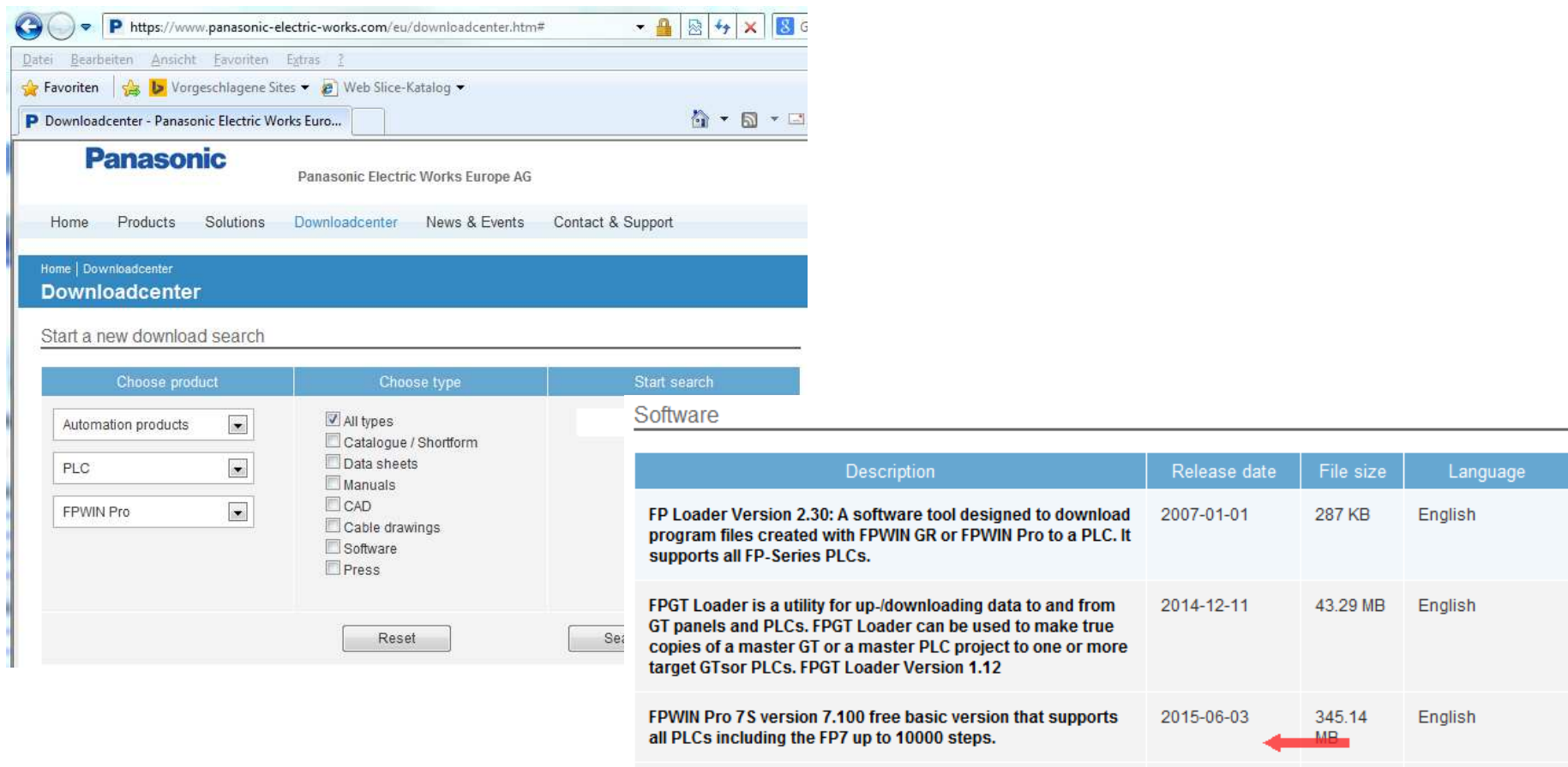


Install FPWINPro 7.1 or higher

If not available please download:

FPWIN Pro 7S version 7.100 free basic version that supports all PLCs including the FP7 up to 10000 steps.

https://www.panasonic-electric-works.com/cps/rde/xbcr/pewnew/sw_63403_0003_fpwinpro7_basic.zip



The screenshot shows the Panasonic Electric Works Europe AG Downloadcenter website. The search filters are set to 'Automation products', 'PLC', and 'FPWIN Pro'. The search results table is titled 'Software' and contains the following data:

Description	Release date	File size	Language
FP Loader Version 2.30: A software tool designed to download program files created with FPWIN GR or FPWIN Pro to a PLC. It supports all FP-Series PLCs.	2007-01-01	287 KB	English
FPGT Loader is a utility for up-/downloading data to and from GT panels and PLCs. FPGT Loader can be used to make true copies of a master GT or a master PLC project to one or more target GTsor PLCs. FPGT Loader Version 1.12	2014-12-11	43.29 MB	English
FPWIN Pro 7S version 7.100 free basic version that supports all PLCs including the FP7 up to 10000 steps.	2015-06-03	345.14 MB	English

I/O Map and unit configuration

- Open FP7FMU_Profibus.pce
- I/O map and unit configuration
Set the correct I/O map

Advanced... Reallocation... Upload from PLC... Download to PLC...

Slot	Product No.	Unit type	Starting word ...	Input	Outp...	Verify	Refresh	Time co...	Current c...	Cassette	Touch panel	
<input type="checkbox"/>	0	AFP7CPS31ES	FP7 CPU	500	10	10	Valid	Valid		200mA	Unregistered	Unregistered
<input type="checkbox"/>	1	AFP7XY64D2P	I/O unit, source (PNP), 32/32 points	0	2	2	Valid	Valid	0	55mA		
<input checked="" type="checkbox"/>	2	AFP7NPFBM	PROFIBUS DP master unit	2	4	4	Valid	Valid		150mA		
<input type="checkbox"/>	3											
<input type="checkbox"/>	4											
<input type="checkbox"/>	5											
<input type="checkbox"/>	6											
<input type="checkbox"/>	7											
<input type="checkbox"/>	8											
<input type="checkbox"/>	9											
<input type="checkbox"/>	10											
<input type="checkbox"/>	11											
<input type="checkbox"/>	12											
<input type="checkbox"/>	13											
<input type="checkbox"/>	14											
<input type="checkbox"/>	15											
<input type="checkbox"/>	16											

Structure of IN and Out variable

Check Address Table in Sycon.net

netDevice - Configuration COMX_100XX_DP_DPM[COMX 100XX-DP/DPM] <1> (#1)

IO Device: COMX 100XX-DP/DPM Device ID: 0x0C61
Vendor: Hilscher GmbH Vendor ID: 0x011E

Navigation Area: Settings, Driver, netX Driver, Device Assignment, Firmware Download, Licensing, Configuration, Bus Parameters, Process Data, **Address Table**, Station Table, Master Settings

Addressing: Display mode: Decimal CSV Export

Inputs:

Station	Address	Device	Name	Module	Type	Length	Address
1	0	FP I/O PROFIBUS DP Slave Unit	FP I/O PROFIBUS DP Slave Unit		4 byte input IB	4	0
3	4	Anybus-CC PROFIBUS DP-V1	Anybus-CC PROFIBUS DP-V1		4 word input IW	4	4
4	12	Anybus-CC PROFIBUS DP-V1	Anybus-CC PROFIBUS DP-V1		2 word input IW	2	12
5	16	FP I/O PROFIBUS DP Slave Unit	FP I/O PROFIBUS DP Slave Unit		4 byte input IB	4	16

Outputs:

Station	Address	Device	Name	Module	Type	Length	Address
1	0	FP I/O PROFIBUS DP Slave Unit	FP I/O PROFIBUS DP Slave Unit		4 byte output QB	4	0
3	4	Anybus-CC PROFIBUS DP-V1	Anybus-CC PROFIBUS DP-V1		4 word output QW	4	4
4	12	Anybus-CC PROFIBUS DP-V1	Anybus-CC PROFIBUS DP-V1		1 word output QW	1	12
5	14	FP I/O PROFIBUS DP Slave Unit	FP I/O PROFIBUS DP Slave Unit		4 byte output QB	4	14

OK Cancel Apply Help

Adjust the array size for the Out and In variable or define a DUT

Download the plc program and test(connect the USB cable to the PLC)

Connect the FP/ with the PC (use the USB cable for the FP7)
Do not use 2 cable !

